



PRICE LIST/CATALOGUE ARDCOAT SYSTEM

JANUARY 2025 EDITION



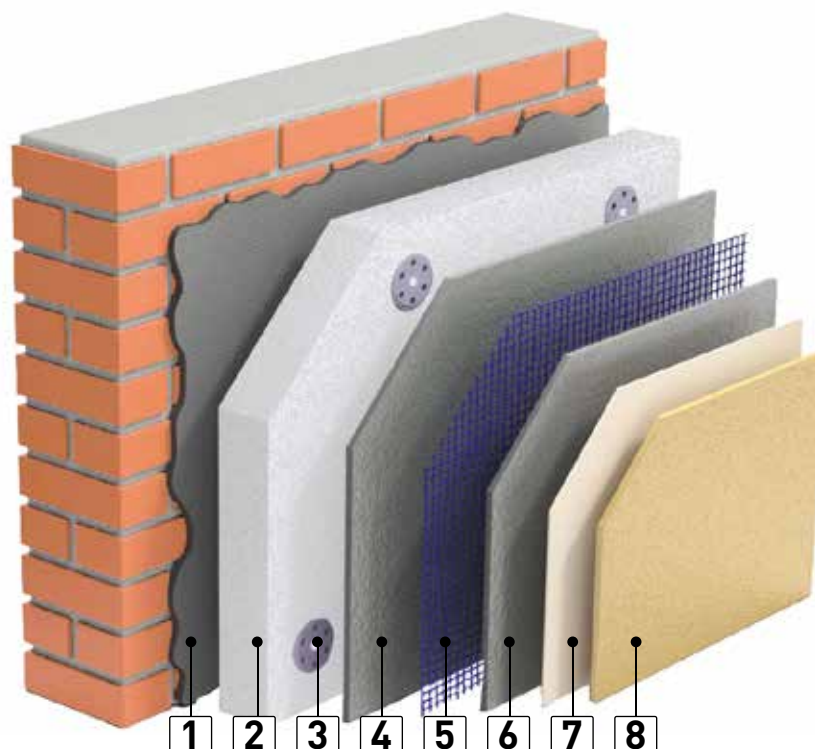
ARDCOAT SYSTEM, ARD's composite thermal insulation system

The Ardcoat System is a solution that, in the coldest seasons, produces a significant increase in internal surface temperature, thus keeping the walls dry and eliminating the conditions for the proliferation of fungi and mold. Obviously, it allows for greater thermal insulation even during the hottest months, reducing any cooling costs.

The insulation created on the external surface effectively prevents any condensation and the correct sizing of the water vapour permeability of the finishing products; these allows for the establishment of an ideal hygrometric balance with the external environment.

A wall is typically made of materials characterized by a different coefficient of linear thermal expansion (bricks, plaster, concrete castings, reinforcing bars, etc.). Daily temperature variations produce differentiated deformations that, over time, give rise to the well-known problems of cracking and crazing. A wall insulated from the outside is thermally more stable because, thanks to its thermal inertia, it will be subject to much smaller temperature variations.

ARDCOAT SYSTEM: how are they composed?



1. **Ardcoat** smoothing adhesives for external thermal insulation systems.
2. **CE** and **CAM** marked insulating panels in **EPS**, **EPS with Graphite**, **Rock Wool**, **Stiferite**, **Cork**, **Aerogel**, **Phenolic Resin**.
3. **PP fixing anchors** for impact or screwing with steel or nylon nail, **compliant with the requirements of the ETAG 014 guideline** and various accessories.
4. **Ardcoat** smoothing adhesives for external thermal insulation systems **compliant with EAD guideline 040083-00-0404**.
5. **Glass fibre nets compliant with EAD guideline 040083-00-0404**.
6. **Ardcoat** smoothing adhesives for external thermal insulation systems **compliant with EAD guideline 040083-00-0404**.
7. **ARD pigmented primers** of various types and grain sizes to match the finish.
8. **ARD colored coatings** with CE marking **according to EN 15824** in various types and grain sizes.

INSURANCE CERTIFICATE

Aware of the high reliability of its products, the meticulousness of the controls and the skills of the construction site, **ARD** offers an additional guarantee with special protections that can also ensure the work carried out by the applicator. Result of the collaboration with the insurance company Generali Italia S.p.A., we offer the user a guarantee certificate for the compensation of the costs of remaking or repair, and for damages resulting from faults or defects in the materials that make up the external insulation system. The insurance policy also covers the costs of scaffolding and installation. The insurance certificate is an important support that our company offers to face a constantly evolving market with greater safety.

The maximum validity period of the insurance coverage is 10 years.

The insurance certificate is issued free of charge; a small flat fee is required to cover administrative costs.



THE CHROMATIC RANGE

The Tinte d'Italia outdoor collection is the reference for our tinting systems and reports on the back of each strip the indications on their suitability for the external insulation system. To avoid degradation phenomena caused by overheating of the surface due to solar radiation, it is necessary to select only finishing shades indicated as suitable. However, for dark shades it is possible, through our distributors, to contact the ard laboratory to evaluate the possibility of producing a sample coating capable of guaranteeing durability.



		ISCHIA				
		21	22	23	24	25
SRI		79	40	31	29	28
CAPPOTTO ETICS		<input checked="" type="checkbox"/>	<input checked="" type="checkbox"/>	<input checked="" type="checkbox"/>	<input type="checkbox"/>	<input type="checkbox"/>
FONDO PRIMER						
SERIE	% variazione costo					
QUARZI QUARTZ						
0.550.	10	20	20	20	20	
0.551.	10					
0.553.	0	10	10	10	10	
0.604.	10					
0.607.	10	30	30	30	30	
0.608.	10	40	40	30	30	
RIV. MURALI THICK COATINGS						

ETA CERTIFICATION v.02 OF 01/08/2023

Ardcoat System's certified offering is growing.

The revision of the **ETA (European Technical Assessment) 17/0640** of ARD Raccanello according to **EAD (European Assessment Document) 040083-00-0404** has in fact provided for the inclusion of new articles regarding the certified kit.

The **Ardcoat System Certified System** is now composed of:

- **Ardcoat C8** Smoothing Adhesive;
- 150 gr/m² **glass fibre mesh**;
- 3 different types of White EPS panels, one of which is CAM;
- 2 different types of EPS panels with graphite, one of which is CAM;
- Pigmented Primer: **Rasante a Pennello**;
- 2 acrylic-siloxane finishes: **Intonaclima 1,2 mm** and the new system grain **Intonaclima 1,5 mm**;
- 1 elastomeric finish: Ardelast Intonachino 1,2 mm;
- 7 different types of fixing plugs.

Furthermore, from today the **Ardcoat System KIT** is also certified with regard to fire reaction according to **EN 13501-1**, with declared performance **B-s2,d0**



v.02 OF 01/08/2023

SMOOTHING ADHESIVES ARDCOAT LINE

Ardcoat S8

Silica smoothing adhesive for thermal insulation systems,
**Complies with the requirements of the European Technical Guide
EAD 040083-00-0404.**

Reaction to fire: Euroclass A1



glue: approx. 3-5 kg/m²
shaving: approx. 4 kg/m²
for 3 mm thickness



25 kg of product
with 6,7 lts of water



recoatable after
5-6 days



certification label
UNI EN 998-1



Code	Description	Packaging	€/Kg	€/packaging	€/m ²
1.967.0535 grey	Ardcoat S8	25 Kg	0,82	20,50	4,10

Ardcoat C8

Carbonate smoothing adhesive for thermal insulation systems,
**Complies with the requirements of the European Technical Guide
EAD 040083-00-0404.**

Reaction to fire: Euroclass A1



glue: approx. 3-5 kg/m²
shaving: approx. 4 kg/m²
for 3 mm thickness



25 kg of product
with 6,5 lts of water



recoatable after
5-6 days



certification label
UNI EN 998-1



ETA-17/0640

Code	Description	Packaging	€/Kg	€/packaging	€/m ²
1.967.0530 grey	Ardcoat C8	25 Kg	0,82	20,50	4,10
1.967.0510 white			0,88	22,00	4,40

Ardcoat L10Glass

Lightweight smoothing adhesive with expanded glass microspheres for thermal insulation systems,

Complies with the requirements of the European Technical Guide EAD 040083-00-0404.

Reaction to fire: Euroclass A1

m²/kg glue: approx. 3-4 kg/m²
shaving: approx. 5,2 kg/m²
for 5 mm thickness



20 kg of product
with 5,6 lts of water

recoatable after
5-6 days



certification label
UNI EN 998-1



Code	Description	Packaging	€/Kg	€/packaging	€/m ²
1.967.0610 white	Ardcoat L10Glass	20 Kg	1,16	23,20	5,80

Ardcoat L10 EPS

Lightweight smoothing adhesive with EPS microspheres for thermal insulation systems,

Complies with the requirements of the European Technical Guide EAD 040083-00-0404.

Reaction to fire: Euroclass A1

m²/kg glue: approx. 3 kg/m²
shaving: approx. 3 kg/m²
for 3 mm thickness



20 kg of product
with 6 lts of water

recoatable after
5-6 days



certification label
UNI EN 998-1



Code	Description	Packaging	€/Kg	€/packaging	€/m ²
1.967.0620 white	Ardcoat L10 EPS	20 Kg	1,42	28,40	4,26

CHECK AVAILABILITY AND DELIVERY TIMES WITH SALES DEPT.MENT

Ardcoat C16

Coarse-grained, fibre-reinforced and water-repellent smoothing adhesive, for thermal insulation systems,

Complies with the requirements of the European Technical Guide EAD 040083-00-0404.

Reaction to fire: Euroclass A1

m²/kg glue: approx. 3-5 kg/m²
shaving: approx. 6 kg/m²
for 5 mm thickness

25 kg of product
with 6,3 lts of water

recoatable after
5-6 days

certification label
UNI EN 998/1:2010



Code	Description	Packaging	€/Kg	€/packaging	€/m ²
1.967.0515 grey	Ardcoat C16	25 Kg	0,78	19,50	3,90
1.967.0511 white			0,86	21,50	4,30

CHECK AVAILABILITY AND DELIVERY TIMES WITH SALES DEPT.MENT

Ardcoat C10

Medium grain smoothing adhesive for thermal insulation systems

Complies with the requirements of the European Technical Guide EAD 040083-00-0404.

Reaction to fire: Euroclass A1

m²/kg glue: approx. 3-5 kg/m²
shaving: approx. 5 kg/m²
for 4 mm thickness

25 kg of product
with 6,5 lts of water

recoatable after
5-6 days

certification label
UNI EN 998/1:2010



Code	Description	Packaging	€/Kg	€/packaging	€/m ²
1.967.0525 grey	Ardcoat C10	25 Kg	0,68	17,00	3,40
1.967.0545 white			0,69	17,25	3,45

CHECK AVAILABILITY AND DELIVERY TIMES WITH SALES DEPT.MENT

Ardcoat M8

Smoothing adhesive based on natural hydraulic lime NHL 3.5 for thermal insulation systems,

Complies with the requirements of the European Technical Guide EAD 040083-00-0404.

Reaction to fire: Euroclass A1



glue: approx. 3-5 kg/m²
shaving: approx. 4 kg/m²
for 3 mm thickness



25 kg of product
with 7 lts of water



recoatable after
5-6 days



certification label
UNI EN 998/1:2010

Code	Description	Packaging	€/Kg	€/packaging	€/m ²
1.967.0540 light brown	Ardcoat M8	25 Kg	1,12	28,00	4,48

CHECK AVAILABILITY AND DELIVERY TIMES WITH SALES DEPT.MENT

INSULATING SHEETS EPS

Ardcoat ReLife 34 ETICS

Insulating panel in white sintered expanded polystyrene class 120 certified Second Life Plastic (PSV), containing 15% recycled eps, meeting the requirements of the CAM (Minimum Environmental Criteria). Compliant with Standard EN 13163, CE marked, ETICS type according to EN 13499. Reaction to fire: Euroclass E. Thermal conductivity: 0.034 W/mK. Standard dimensions 1000x500 mm, 1000x1000 mm, 2000x1000 mm.



On demand:

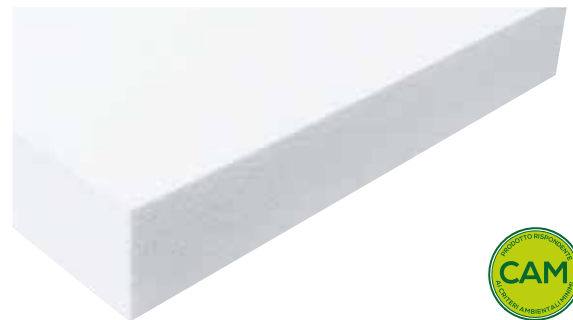
Thicknesses up to 400 mm. Dimensions 1200x600 mm + 10%.
Slats width less than 400 mm + 30%.
Rebating on 4 sides + 1.20 €/m² price list

Code	Description	RD	pcs./pkg.	m ² /pkg.	pcs./pallet	m ² /pallet
6.968.0816	ARDCOAT ReLife 34 ETICS CAM 1000x500x40 mm	1,15	15	7,5	150	75
6.968.0817	ARDCOAT ReLife 34 ETICS CAM 1000x500x50 mm	1,45	12	6	120	60
6.968.0818	ARDCOAT ReLife 34 ETICS CAM 1000x500x60 mm	1,75	10	5	100	50
6.968.0819	ARDCOAT ReLife 34 ETICS CAM 1000x500x80 mm	2,35	7	3,5	70	35
6.968.0820	ARDCOAT ReLife 34 ETICS CAM 1000x500x100 mm	2,90	6	3	60	30
6.968.0821	ARDCOAT ReLife 34 ETICS CAM 1000x500x120 mm	3,50	5	2,5	50	25
6.968.0822	ARDCOAT ReLife 34 ETICS CAM 1000x500x140 mm	4,10	4	2	40	20
6.968.0824	ARDCOAT ReLife 34 ETICS CAM 1000x500x160 mm	4,70	3	1,5	30	15
6.968.0825	ARDCOAT ReLife 34 ETICS CAM 1000x500x180 mm	5,25	3	1,5	30	15
6.968.0826	ARDCOAT ReLife 34 ETICS CAM 1000x500x200 mm	5,85	3	1,5	30	15

CHECK THE QUOTATION AND THE TRANSPORTATION WITH SALES DEPT.MENT

Ardcoat ReLife 35 ETICS

Insulating panel in white sintered expanded polystyrene class 100 certified Second Life Plastic (PSV), containing 15% recycled eps, meeting the requirements of the CAM (Minimum Environmental Criteria). Compliant with Standard EN 13163, CE marked, ETICS type according to EN 13499. Reaction to fire: Euroclass E. Thermal conductivity: 0.035 W/mK. Standard dimensions 1000x500 mm, 1000x1000 mm, 2000x1000 mm.



On demand:

Thicknesses up to 400 mm. Dimensions 1200x600 mm + 10%.
Slats width less than 400 mm + 30%.
Rebating on 4 sides +1.20 €/m² price list

Code	Description	RD	pcs./pkg.	m ² /pkg.	pcs./pallet	m ² /pallet
6.968.0829	ARDCOAT ReLife 35 ETICS CAM 1000x500x40 mm	1,10	15	7,5	150	75
6.968.0830	ARDCOAT ReLife 35 ETICS CAM 1000x500x50 mm	1,40	12	6	120	60
6.968.0831	ARDCOAT ReLife 35 ETICS CAM 1000x500x60 mm	1,70	10	5	100	50
6.968.0832	ARDCOAT ReLife 35 ETICS CAM 1000x500x80 mm	2,25	7	3,5	70	35
6.968.0833	ARDCOAT ReLife 35 ETICS CAM 1000x500x100 mm	2,85	6	3	60	30
6.968.0834	ARDCOAT ReLife 35 ETICS CAM 1000x500x120 mm	3,40	5	2,5	50	25
6.968.0835	ARDCOAT ReLife 35 ETICS CAM 1000x500x140 mm	4,00	4	2	40	20
6.968.0837	ARDCOAT ReLife 35 ETICS CAM 1000x500x160 mm	4,55	3	1,5	30	15
6.968.0838	ARDCOAT ReLife 35 ETICS CAM 1000x500x180 mm	5,10	3	1,5	30	15
6.968.0839	ARDCOAT ReLife 35 ETICS CAM 1000x500x200 mm	5,70	3	1,5	30	15

CHECK THE QUOTATION AND THE TRANSPORTATION WITH SALES DEPT.MENT

ARD EPS BIANCO CAM

Insulating panel in white sintered expanded polystyrene class 80 with improved lambda certified Second Life Plastic (PSV), containing 15% recycled EPS, meeting the requirements of the CAM (Minimum Environmental Criteria). Compliant with the EN 13163 standard, CE marked, ETICS type according to EN 13499. Fire reaction: Euroclass E. Thermal conductivity: 0.036 W/mK.

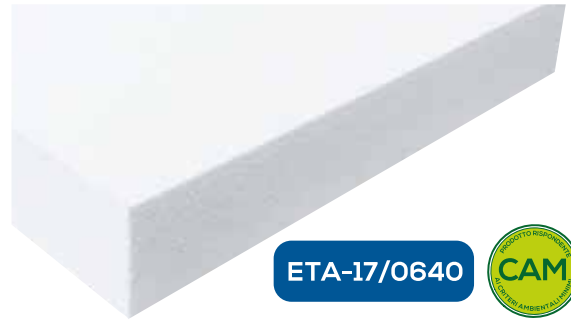
Standard dimensions 1000x500 mm, 1000x1000 mm, 2000x1000 mm.

On demand:

Thicknesses up to 400 mm. Dimensions 1200x600 mm + 10%.

Slats width less than 400 mm + 30%.

Rebating on 4 sides + 1.20 €/m² price list



ETA-17/0640



Code	Description	RD	pcs./pkg.	m ² /pkg.	pcs./pallet	m ² /pallet
6.968.0366	ARD EPS BIANCO CAM 1000x500x40 mm	1,10	15	7,5	150	75
6.968.0367	ARD EPS BIANCO CAM 1000x500x50 mm	1,35	12	6	120	60
6.968.0369	ARD EPS BIANCO CAM 1000x500x60 mm	1,65	10	5	100	50
6.968.0370	ARD EPS BIANCO CAM 1000x500x80 mm	2,20	7	3,5	70	35
6.968.0372	ARD EPS BIANCO CAM 1000x500x100 mm	2,75	6	3	60	30
6.968.0373	ARD EPS BIANCO CAM 1000x500x120 mm	3,30	5	2,5	50	25
6.968.0375	ARD EPS BIANCO CAM 1000x500x140 mm	3,85	4	2	40	20
6.968.0378	ARD EPS BIANCO CAM 1000x500x160 mm	4,40	3	1,5	30	15
6.968.0379	ARD EPS BIANCO CAM 1000x500x180 mm	5,00	3	1,5	30	15
6.968.0381	ARD EPS BIANCO CAM 1000x500x200 mm	5,55	3	1,5	30	15

CHECK THE QUOTATION AND THE TRANSPORTATION WITH SALES DEPT.MENT

Ardcoat ReLife 38 ETICS

Insulating panel in white sintered expanded polystyrene class 80 certified Second Life Plastic (PSV), containing 15% recycled EPS, meeting the requirements of the CAM (Minimum Environmental Criteria). Compliant with Standard EN 13163, CE marked, ETICS type according to EN 13499. Reaction to fire: Euroclass E. Thermal conductivity: 0.038 W/mK.

Standard dimensions 1000x500 mm, 1000x1000 mm, 2000x1000 mm.

On demand:

Thicknesses up to 400 mm. Dimensions 1200x600 mm + 10%.

Slats width less than 400 mm + 30%.

Rebated on 4 sides + 1.20 €/m² list price.



Code	Description	RD	pcs./pkg.	m ² /pkg.	pcs./pallet	m ² /pallet
6.968.0842	ARDCOAT ReLife 38 ETICS CAM 1000x500x40 mm	1,05	15	7,5	150	75
6.968.0843	ARDCOAT ReLife 38 ETICS CAM 1000x500x50 mm	1,30	12	6	120	60
6.968.0844	ARDCOAT ReLife 38 ETICS CAM 1000x500x60 mm	1,55	10	5	100	50
6.968.0845	ARDCOAT ReLife 38 ETICS CAM 1000x500x80 mm	2,10	7	3,5	70	35
6.968.0846	ARDCOAT ReLife 38 ETICS CAM 1000x500x100 mm	2,60	6	3	60	30
6.968.0847	ARDCOAT ReLife 38 ETICS CAM 1000x500x120 mm	3,15	5	2,5	50	25
6.968.0848	ARDCOAT ReLife 38 ETICS CAM 1000x500x140 mm	3,65	4	2	40	20
6.968.0850	ARDCOAT ReLife 38 ETICS CAM 1000x500x160 mm	4,20	3	1,5	30	15
6.968.0851	ARDCOAT ReLife 38 ETICS CAM 1000x500x180 mm	4,70	3	1,5	30	15
6.968.0852	ARDCOAT ReLife 38 ETICS CAM 1000x500x200 mm	5,25	3	1,5	30	15

CHECK THE QUOTATION AND THE TRANSPORTATION WITH SALES DEPT.MENT

ARD EPS 100 BIANCO

Insulating panel in white sintered expanded polystyrene class S for thermal insulation systems. Complies with Standard EN 13163, CE marked, type ETICS according to EN 13499.

Reaction to fire: Euroclass E. Thermal conductivity: 0.036 W/mK.
Standard dimensions 1000x500 mm, 1000x1000 mm, 2000x1000 mm.

On demand:

Thicknesses up to 400 mm. Dimensions 1200x600 mm + 10%.

Slats width less than 400 mm + 30%.

Rebating on 4 sides + 1.20 €/m² price list



ETA-17/0640

Code	Description	RD	pcs./pkg.	m ² /pkg.	pcs./pallet	m ² /pallet
6.968.0332	ARD EPS 100 BIANCO 1000x500x40 mm	1,10	15	7,5	150	75
6.968.0335	ARD EPS 100 BIANCO 1000x500x50 mm	1,35	12	6	120	60
6.968.0338	ARD EPS 100 BIANCO 1000x500x60 mm	1,65	10	5	100	50
6.968.0341	ARD EPS 100 BIANCO 1000x500x80 mm	2,20	7	3,5	70	35
6.968.0344	ARD EPS 100 BIANCO 1000x500x100 mm	2,75	6	3	60	30
6.968.0347	ARD EPS 100 BIANCO 1000x500x120 mm	3,30	5	2,5	50	25
6.968.0350	ARD EPS 100 BIANCO 1000x500x140 mm	3,85	4	2	40	20
6.968.0356	ARD EPS 100 BIANCO 1000x500x160 mm	4,40	3	1,5	30	15
6.968.0359	ARD EPS 100 BIANCO 1000x500x180 mm	5,00	3	1,5	30	15
6.968.0362	ARD EPS 100 BIANCO 1000x500x200 mm	5,55	3	1,5	30	15

CHECK THE QUOTATION AND THE TRANSPORTATION WITH SALES DEPT.MENTPT.MENT

ARD EPS BIANCO

Insulating panel in white sintered expanded polystyrene class 100 for thermal insulation systems. Complies with Standard EN 13163, CE marked, type ETICS according to EN 13499.

Reaction to fire: Euroclass E. Thermal conductivity: 0.035 W/mK.
Standard dimensions 1000x500 mm, 1000x1000 mm, 2000x1000 mm.

On demand:

Thicknesses up to 400 mm. Dimensions 1200x600 mm + 10%.

Slats width less than 400 mm + 30%.

Rebating on 4 sides + 1.20 €/m² price list



ETA-17/0640

Code	Description	RD	pcs./pkg.	m ² /pkg.	pcs./pallet	m ² /pallet
6.968.0374	ARD EPS BIANCO 1000x500x40 mm	1,10	15	7,5	150	75
6.968.0377	ARD EPS BIANCO 1000x500x50 mm	1,40	12	6	120	60
6.968.0380	ARD EPS BIANCO 1000x500x60 mm	1,70	10	5	100	50
6.968.0383	ARD EPS BIANCO 1000x500x80 mm	2,25	7	3,5	70	35
6.968.0386	ARD EPS BIANCO 1000x500x100 mm	2,85	6	3	60	30
6.968.0389	ARD EPS BIANCO 1000x500x120 mm	3,40	5	2,5	50	25
6.968.0392	ARD EPS BIANCO 1000x500x140 mm	4,00	4	2	40	20
6.968.0398	ARD EPS BIANCO 1000x500x160 mm	4,55	3	1,5	30	15
6.968.0401	ARD EPS BIANCO 1000x500x180 mm	5,10	3	1,5	30	15
6.968.0404	ARD EPS BIANCO 1000x500x200 mm	5,70	3	1,5	30	15

CHECK THE QUOTATION AND THE TRANSPORTATION WITH SALES DEPT.MENT

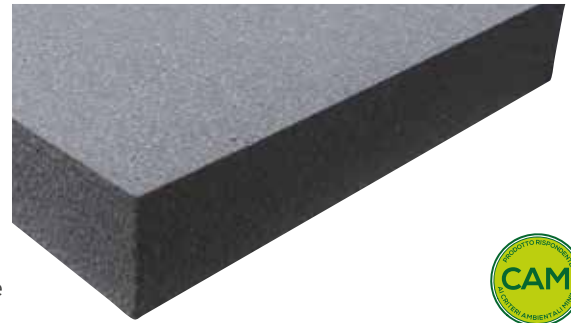
LASTRE ISOLANTI EPS CON GRAFITE

Ardcoat ReLife31 ETICS

Insulating panel in expanded polystyrene sintered with graphite class 80 certified Second Life Plastic (PSV), containing 15% recycled eps, meeting the requirements of the CAM (Minimum Environmental Criteria). Compliant with Standard EN 13163, CE marked, type ETICS according to EN 13499. Reaction to fire: Euroclass E. Thermal conductivity: 0.031 W/mK. Standard dimensions 1000x500 mm, 1000x1000 mm, 2000x1000 mm.

On demand:

Thicknesses up to 400 mm. Dimensions 1200x600 mm + 10%.
Slats width less than 400 mm + 30%. Rabbeting on 4 sides + 1.20 €/m² price list



Code	Description	RD	pcs./pkg.	m ² /pkg.	pcs./pallet	m ² /pallet
6.968.0855	ARDCOAT ReLife31 ETICS 1000x500x40 mm	1,25	15	7,5	150	75
6.968.0856	ARDCOAT ReLife31 ETICS 1000x500x50 mm	1,60	12	6	120	60
6.968.0857	ARDCOAT ReLife31 ETICS 1000x500x60 mm	1,90	10	5	100	50
6.968.0858	ARDCOAT ReLife31 ETICS 1000x500x80 mm	2,55	7	3,5	70	35
6.968.0859	ARDCOAT ReLife31 ETICS 1000x500x100 mm	3,20	6	3	60	30
6.968.0860	ARDCOAT ReLife31 ETICS 1000x500x120 mm	3,85	5	2,5	50	25
6.968.0861	ARDCOAT ReLife31 ETICS 1000x500x140 mm	4,50	4	2	40	20
6.968.0863	ARDCOAT ReLife31 ETICS 1000x500x160 mm	5,15	3	1,5	30	15
6.968.0864	ARDCOAT ReLife31 ETICS 1000x500x180 mm	5,80	3	1,5	30	15
6.968.0865	ARDCOAT ReLife31 ETICS 1000x500x200 mm	6,45	3	1,5	30	15

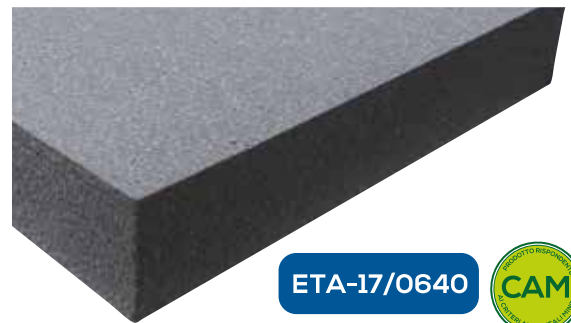
CHECK THE QUOTATION AND THE TRANSPORTATION WITH SALES DEPT.MENT

ARD EPS GRIGIO CAM CON GRAFITE

Insulating panel in expanded polystyrene sintered with graphite class S certified Second Life Plastic (PSV), containing 15% recycled eps, meeting the requirements of the CAM (Minimum Environmental Criteria). Compliant with Standard EN 13163, CE marked, type ETICS according to EN 13499. Reaction to fire: Euroclass E. Thermal conductivity: 0.031 W/mK. Standard dimensions 1000x500 mm, 1000x1000 mm, 2000x1000 mm.

On demand:

Thicknesses up to 400 mm. Dimensions 1200x600 mm + 10%.
Slats width less than 400 mm + 30%. Rabbeting on 4 sides + 1.20 €/m² price list



ETA-17/0640



Code	Description	RD	pcs./pkg.	m ² /pkg.	pcs./pallet	m ² /pallet
6.968.0411	ARD EPS GRIGIO CAM 1000x500x40 mm	1,25	15	7,5	150	75
6.968.0412	ARD EPS GRIGIO CAM 1000x500x50 mm	1,60	12	6	120	60
6.968.0414	ARD EPS GRIGIO CAM 1000x500x60 mm	1,90	10	5	100	50
6.968.0415	ARD EPS GRIGIO CAM 1000x500x80 mm	2,55	7	3,5	70	35
6.968.0417	ARD EPS GRIGIO CAM 1000x500x100 mm	3,20	6	3	60	30
6.968.0418	ARD EPS GRIGIO CAM 1000x500x120 mm	3,85	5	2,5	50	25
6.968.0420	ARD EPS GRIGIO CAM 1000x500x140 mm	4,50	4	2	40	20
6.968.0423	ARD EPS GRIGIO CAM 1000x500x160 mm	5,15	3	1,5	30	15
6.968.0424	ARD EPS GRIGIO CAM 1000x500x180 mm	5,80	3	1,5	30	15
6.968.0426	ARD EPS GRIGIO CAM 1000x500x200 mm	6,45	3	1,5	30	15

CHECK THE QUOTATION AND THE TRANSPORTATION WITH SALES DEPT.MENT

Ardcoat ReLife30 ETICS con grafite

Insulating panel in expanded polystyrene sintered with graphite class 100 certified Second Life Plastic (PSV), containing 15% recycled EPS, meeting the requirements of the CAM (Minimum Environmental Criteria). Compliant with Standard EN 13163, CE marked, type ETICS according to EN 13499. Reaction to fire: Euroclass E. Thermal conductivity: 0.030 W/mK. Standard dimensions 1000x500 mm, 1000x1000 mm, 2000x1000 mm.



On demand:

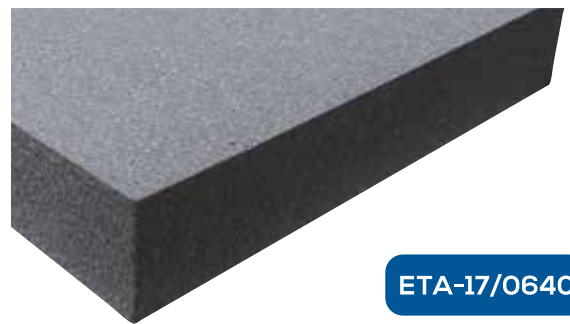
Thicknesses up to 400 mm. Dimensions 1200x600 mm + 10%. Slats width less than 400 mm + 30%. Rabbeting on 4 sides +1.20 €/m² list price.

Code	Description	RD	pcs./pkg.	m ² /pkg.	pcs./pallet	m ² /pallet
6.968.0867	ARDCOAT ReLife30 ETICS 1000x500x30 mm	1,00	20	10	200	100
6.968.0868	ARDCOAT ReLife30 ETICS 1000x500x40 mm	1,30	15	7,5	150	75
6.968.0869	ARDCOAT ReLife30 ETICS 1000x500x50 mm	1,65	12	6	120	60
6.968.0870	ARDCOAT ReLife30 ETICS 1000x500x60 mm	2,00	10	5	100	50
6.968.0871	ARDCOAT ReLife30 ETICS 1000x500x80 mm	2,65	7	3,5	70	35
6.968.0872	ARDCOAT ReLife30 ETICS 1000x500x100 mm	3,30	6	3	60	30
6.968.0873	ARDCOAT ReLife30 ETICS 1000x500x120 mm	4,00	5	2,5	50	25
6.968.0874	ARDCOAT ReLife30 ETICS 1000x500x140 mm	4,65	4	2	40	20
6.968.0876	ARDCOAT ReLife30 ETICS 1000x500x160 mm	5,30	3	1,5	30	15
6.968.0877	ARDCOAT ReLife30 ETICS 1000x500x180 mm	6,00	3	1,5	30	15
6.968.0878	ARDCOAT ReLife30 ETICS 1000x500x200 mm	6,65	3	1,5	30	15

CHECK THE QUOTATION AND THE TRANSPORTATION WITH SALES DEPT.MENT

ARD EPS GRIGIO CON GRAFITE

Insulating panel in expanded polystyrene sintered with graphite class 80 for thermal insulation systems according to EN 13163, CE marked type ETICS according to EN 13499. Reaction to fire: Euroclass E. Thermal conductivity: 0.031 W/mK. Standard dimensions 1000x500 mm, 1000x1000 mm, 2000x1000 mm.



ETA-17/0640

On demand:

Thicknesses up to 400 mm. Dimensions 1200x600 mm + 10%. Slats width less than 400 mm + 30%. Rabbeting on 4 sides + 1.20 €/m² price list

Code	Description	RD	pcs./pkg.	m ² /pkg.	pcs./pallet	m ² /pallet
6.968.0413	ARD EPS GRIGIO GRAFITE 1000x500x40 mm	1,25	15	7,5	150	75
6.968.0416	ARD EPS GRIGIO GRAFITE 1000x500x50 mm	1,60	12	6,0	120	60
6.968.0419	ARD EPS GRIGIO GRAFITE 1000x500x60 mm	1,90	10	5,0	100	50
6.968.0422	ARD EPS GRIGIO GRAFITE 1000x500x80 mm	2,55	7	3,5	70	35
6.968.0425	ARD EPS GRIGIO GRAFITE 1000x500x100 mm	3,20	6	3,0	60	30
6.968.0428	ARD EPS GRIGIO GRAFITE 1000x500x120 mm	3,85	5	2,5	50	25
6.968.0431	ARD EPS GRIGIO GRAFITE 1000x500x140 mm	4,50	4	2,0	40	20
6.968.0437	ARD EPS GRIGIO GRAFITE 1000x500x160 mm	5,15	3	1,5	30	15
6.968.0440	ARD EPS GRIGIO GRAFITE 1000x500x180 mm	5,80	3	1,5	30	15
6.968.0443	ARD EPS GRIGIO GRAFITE 1000x500x200 mm	6,45	3	1,5	30	15

CHECK THE QUOTATION AND THE TRANSPORTATION WITH SALES DEPT.MENT

Ardcoat Isolambda 30 etics

Insulating panel in expanded polystyrene sintered with graphite class 100 for thermal insulation systems according to EN 13163, CE marked type ETICS according to EN 13499.
 Reaction to fire: Euroclass E. Thermal conductivity: 0.030 W/mK.
 Standard dimensions 1000x500 mm, 1000x1000 mm, 2000x1000 mm.



On demand:

Thicknesses up to 400 mm. Dimensions 1200x600 mm + 10%.
 Slats width less than 400 mm + 30%. Rabbeting on 4 sides +1.20 €/m² list price.

Code	Description	RD	pcs./pkg.	m ² /pkg.	pcs./pallet	m ² /pallet
6.968.0455	ARDCOAT ISOLAMBDA 30 1000x500x40 mm	1,30	15	7,5	150	75
6.968.0458	ARDCOAT ISOLAMBDA 30 1000x500x50 mm	1,65	12	6	120	60
6.968.0461	ARDCOAT ISOLAMBDA 30 1000x500x60 mm	2,00	10	5	100	50
6.968.0464	ARDCOAT ISOLAMBDA 30 1000x500x80 mm	2,65	7	3,5	70	35
6.968.0467	ARDCOAT ISOLAMBDA 30 1000x500x100 mm	3,30	6	3	60	30
6.968.0470	ARDCOAT ISOLAMBDA 30 1000x500x120 mm	4,00	5	2,5	50	25
6.968.0473	ARDCOAT ISOLAMBDA 30 1000x500x140 mm	4,65	4	2	40	20
6.968.0479	ARDCOAT ISOLAMBDA 30 1000x500x160 mm	5,30	3	1,5	30	15
6.968.0482	ARDCOAT ISOLAMBDA 30 1000x500x180 mm	6,00	3	1,5	30	15
6.968.0485	ARDCOAT ISOLAMBDA 30 1000x500x200 mm	6,65	3	1,5	30	15

CHECK THE QUOTATION AND THE TRANSPORTATION WITH SALES DEPT.MENT

Ardcoat Isolambda 31 Detensionato etics

Insulating panel in expanded polystyrene sintered with graphite class 80 with pre-cuts to reduce tension; used for thermal insulation systems according to EN 13163, CE marked ETICS type according to EN 13499.
 Reaction to fire: Euroclass E. Thermal conductivity: 0.031 W/mK.
 Standard dimensions 1000x500 mm.



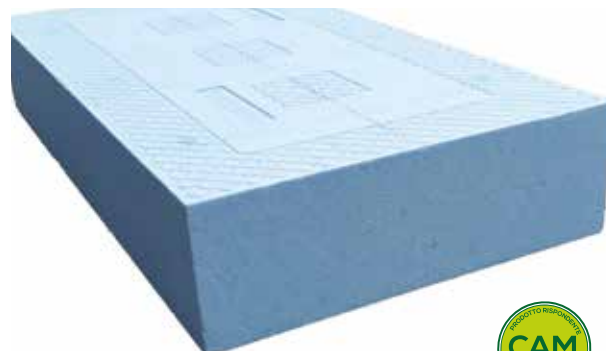
Code	Description	RD	pcs./pkg.	m ² /pkg.	pcs./pallet	m ² /pallet
6.968.0494	ARDCOAT ISOLAMBDA 31 DET. 1000x500x80 mm	2,55	7	3,5	70	35
6.968.0497	ARDCOAT ISOLAMBDA 31 DET. 1000x500x100 mm	3,20	6	3	60	30
6.968.0500	ARDCOAT ISOLAMBDA 31 DET. 1000x500x120 mm	3,85	5	2,5	50	25
6.968.0503	ARDCOAT ISOLAMBDA 31 DET. 1000x500x140 mm	4,50	4	2	40	20
6.968.0509	ARDCOAT ISOLAMBDA 31 DET. 1000x500x160 mm	5,15	3	1,5	30	15
6.968.0512	ARDCOAT ISOLAMBDA 31 DET. 1000x500x180 mm	5,80	3	1,5	30	15
6.968.0515	ARDCOAT ISOLAMBDA 31 DET. 1000x500x200 mm	6,45	3	1,5	30	15
6.968.0521	ARDCOAT ISOLAMBDA 31 DET. 1000x500x240 mm	7,70	2	1	20	10
6.968.0522	ARDCOAT ISOLAMBDA 31 DET. 1000x500x260 mm	8,30	2	1	20	10
6.968.0523	ARDCOAT ISOLAMBDA 31 DET. 1000x500x280 mm	9,00	2	1	20	10

CHECK THE QUOTATION AND THE TRANSPORTATION WITH SALES DEPT.MENT

EXPANDED POLYSTYRENE

Ardcoat Scacomatto etics tagliato da blocco

Insulating panel in blue sintered expanded polystyrene class 150 with low water absorption, certified Second Life Plastic (PSV), containing 15% recycled EPS, meeting the requirements of the CAM (Minimum Environmental Criteria). Cut from block for thermal insulation systems, according to EN 13163, CE marked, ETICS type according to EN 13499. Fire reaction: Euroclass E. Thermal conductivity: 0.034 W/mK. Standard dimensions 1000x500 mm, 1000x1000 mm, 2000x1000 mm.



On demand:

Dimensions 1200x600 mm + 10%.

Slats width less than 400 mm + 30%.

Rebating on 4 sides + 1.20 €/m² list price.

Code	Description	RD	pcs./pkg.	m ² /pkg.	pcs./pallet	m ² /pallet
6.968.0533	ARDCOAT SCACCOMATTO 1000x500x60 mm	1,75	10	5	100	50
6.968.0536	ARDCOAT SCACCOMATTO 1000x500x80 mm	2,35	7	3,5	70	35
6.968.0539	ARDCOAT SCACCOMATTO 1000x500x100 mm	2,90	6	3	60	30
6.968.0542	ARDCOAT SCACCOMATTO 1000x500x120 mm	3,50	5	2,5	50	25
6.968.0545	ARDCOAT SCACCOMATTO 1000x500x140 mm	4,10	4	2	40	20
6.968.0548	ARDCOAT SCACCOMATTO 1000x500x150 mm	4,40	4	2	40	20
6.968.0551	ARDCOAT SCACCOMATTO 1000x500x160 mm	4,70	3	1,5	30	15
6.968.0554	ARDCOAT SCACCOMATTO 1000x500x180 mm	5,25	3	1,5	30	15
6.968.0557	ARDCOAT SCACCOMATTO 1000x500x200 mm	5,85	3	1,5	30	15
6.968.0560	ARDCOAT SCACCOMATTO 1000x500x220 mm	6,45	2	1	20	10
6.968.0563	ARDCOAT SCACCOMATTO 1000x500x240 mm	7,05	2	1	20	10

CHECK THE QUOTATION AND THE TRANSPORTATION WITH SALES DEPT.MENT

ROCK WOOL

Ardcoat Lana di Roccia etics PLUS

Rigid water-repellent insulating panel in bio soluble rock wool with semi-oriented fibers treated with thermosetting resins, CE marked in accordance with the UNI EN 13162 standard, certified for coat applications according to EAD 040083-00-0404.

Fire reaction: Euroclass A1.

Thermal conductivity: 0.034 W/mK. Sold in packs.



Accessories

Cutter for mineral wool panels: on request.

Code	Description	RD	m ² /pkg.	pkg./pallet	m ² /pallet
6.968.0573	ARDCOAT LANA DI ROCCIA PLUS 1000x600x50 mm	1,45	4,80	6	28,8
6.968.0574	ARDCOAT LANA DI ROCCIA PLUS 1000x600x60 mm	1,75	3,00	8	24
6.968.0576	ARDCOAT LANA DI ROCCIA PLUS 1000x600x80 mm	2,35	3,00	6	18
6.968.0575	ARDCOAT LANA DI ROCCIA PLUS 1000x600x100 mm	2,90	2,40	6	14,4
6.968.0578	ARDCOAT LANA DI ROCCIA PLUS 1000x600x120 mm	3,50	1,20	10	12
6.968.0577	ARDCOAT LANA DI ROCCIA PLUS 1000x600x140 mm	4,10	1,20	8	9,6
6.968.0580	ARDCOAT LANA DI ROCCIA PLUS 1000x600x160 mm	4,70	1,20	6	7,2
6.968.0582	ARDCOAT LANA DI ROCCIA PLUS 1000x600x180 mm	5,25	1,20	6	7,2
6.968.0583	ARDCOAT LANA DI ROCCIA PLUS 1000x600x200 mm	5,85	1,20	6	7,2
6.968.0585	ARDCOAT LANA DI ROCCIA PLUS 1000x600x220 mm	6,45	0,60	10	6
6.968.0586	ARDCOAT LANA DI ROCCIA PLUS 1000x600x240 mm	7,05	0,60	10	6

CHECK THE QUOTATION AND THE TRANSPORTATION WITH SALES DEPT.MENT

Ardcoat Lana di Roccia etics

Rigid water-repellent insulating panel in biosoluble rock wool with semi-oriented fibers treated with thermosetting resins, CE marked in accordance with the UNI EN 13162 standard, certified for coat applications according to EAD 040083-00-0404.

Fire reaction: Euroclass A1.

Thermal conductivity: 0.035 W/mK. Sold in packs.



Accessories

Cutter for mineral wool panels: on request.

Code	Description	RD	m ² /pkg.	pkg./pallet	m ² /pallet
6.968.0584	ARDCOAT LANA DI ROCCIA 1000x600x40 mm	1,10	3,6	10	36
6.968.0587	ARDCOAT LANA DI ROCCIA 1000x600x50 mm	1,40	3,6	8	28,8
6.968.0590	ARDCOAT LANA DI ROCCIA 1000x600x60 mm	1,70	3,0	8	24
6.968.0593	ARDCOAT LANA DI ROCCIA 1000x600x80 mm	2,25	1,8	10	18
6.968.0596	ARDCOAT LANA DI ROCCIA 1000x600x100 mm	2,85	1,8	8	14,4
6.968.0599	ARDCOAT LANA DI ROCCIA 1000x600x120 mm	3,40	1,2	10	12
6.968.0602	ARDCOAT LANA DI ROCCIA 1000x600x140 mm	4,00	1,2	8	9,6
6.968.0605	ARDCOAT LANA DI ROCCIA 1000x600x160 mm	4,55	1,2	6	7,2
6.968.0608	ARDCOAT LANA DI ROCCIA 1000x600x180 mm	5,10	1,2	6	7,2
6.968.0611	ARDCOAT LANA DI ROCCIA 1000x600x200 mm	5,70	1,2	6	7,2
6.968.0612	ARDCOAT LANA DI ROCCIA 1000x600x220 mm	6,25	0,6	10	6
6.968.0613	ARDCOAT LANA DI ROCCIA 1000x600x240 mm	6,25	0,6	10	6

CHECK THE QUOTATION AND THE TRANSPORTATION WITH SALES DEPT.MENT

STIFERITE - PHENOLIC RESIN

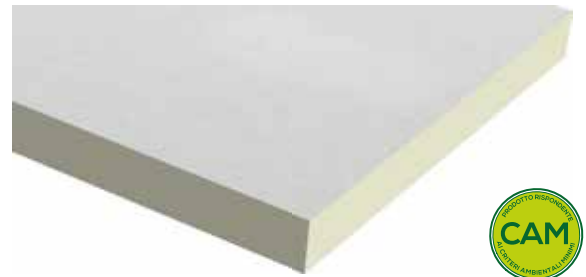
Ardcoat Stiferite class SK

Insulating panel for thermal insulation consisting of an insulating component in polyiso foam, expanded without the use of CFC or HCFC, covered on both sides with saturated glass veil.

CE marked in accordance with the UNI EN 13165 standard.

Fire reaction: Euroclass E according to EN13150-1.

Thermal conductivity 0.028 W/mK for thicknesses from 20 to 70 mm, 0.026 W/mK for thicknesses from 80 to 100 mm, 0.025 W/mK for thicknesses from 120 to 200 mm.



Code	Description	RD	pcs./pkg.	m ² /pkg.	pcs./pallet	m ² /pallet
6.968.0662	ARDCOAT STIFERITE CLASS SK 1200x600x20 mm	0,74	30	21,60	8	172,80
6.968.0665	ARDCOAT STIFERITE CLASS SK 1200x600x30 mm	1,11	20	14,40	8	288,00
6.968.0668	ARDCOAT STIFERITE CLASS SK 1200x600x40 mm	1,48	16	11,52	8	92,16
6.968.0671	ARDCOAT STIFERITE CLASS SK 1200x600x50 mm	1,92	14	10,08	7	70,56
6.968.0674	ARDCOAT STIFERITE CLASS SK 1200x600x60 mm	2,31	12	8,64	7	60,48
6.968.0677	ARDCOAT STIFERITE CLASS SK 1200x600x70 mm	2,69	10	7,20	7	50,40
6.968.0680	ARDCOAT STIFERITE CLASS SK 1200x600x80 mm	3,08	8	5,76	8	46,08
6.968.0683	ARDCOAT STIFERITE CLASS SK 1200x600x100 mm	4,0	6	4,32	8	34,56
6.968.0686	ARDCOAT STIFERITE CLASS SK 1200x600x120 mm	4,80	6	4,32	7	30,24
6.968.0689	ARDCOAT STIFERITE CLASS SK 1200x600x140 mm	5,60	6	4,32	6	25,92
6.968.0692	ARDCOAT STIFERITE CLASS SK 1200x600x160 mm	6,40	4	2,88	8	23,04
6.968.0695	ARDCOAT STIFERITE CLASS SK 1200x600x180 mm	7,50	4	2,88	5	20,16
6.968.0698	ARDCOAT STIFERITE CLASS SK 1200x600x200 mm	8,33	4	2,88	5	20,16

CHECK THE QUOTATION AND THE TRANSPORTATION WITH SALES DEPT.MENT

Ardcoat Resina Fenolica

Insulating panel for thermal insulation consisting of an insulating component in closed-cell phenolic foam, expanded without the use of CFCs and HCFCs, covered on both sides with saturated glass veil.

CE marked in accordance with the UNI EN 13166 standard.

Reaction to fire: Euroclass B s1 d0 according to EN13150-1.

Thermal conductivity 0.021 W/mK for thicknesses from 20 to 70 mm, 0.019 W/mK for thicknesses from 80 to 180 mm.



Code	Description	RD	pcs./pkg.	m ² /pkg.	pcs./pallet	m ² /pallet
6.968.0630	ARDCOAT RESINA FENOLICA 1200x600x20 mm	0,95	12	8,64	20	172,80
6.968.0631	ARDCOAT RESINA FENOLICA 1200x600x30 mm	1,40	10	7,20	16	115,20
6.968.0633	ARDCOAT RESINA FENOLICA 1200x600x40 mm	1,90	6	4,32	20	86,40
6.968.0634	ARDCOAT RESINA FENOLICA 1200x600x50 mm	2,35	8	5,76	12	69,12
6.968.0636	ARDCOAT RESINA FENOLICA 1200x600x60 mm	2,85	5	3,60	16	57,60
6.968.0637	ARDCOAT RESINA FENOLICA 1200x600x70 mm	3,30	7	5,04	10	50,40
6.968.0629	ARDCOAT RESINA FENOLICA 1200x600x80 mm	4,20	5	3,60	12	43,20
6.968.0632	ARDCOAT RESINA FENOLICA 1200x600x90 mm	4,70	5	3,60	10	36,00
6.968.0635	ARDCOAT RESINA FENOLICA 1200x600x100 mm	5,25	4	2,88	12	34,56
6.968.0638	ARDCOAT RESINA FENOLICA 1200x600x110 mm	5,75	3	2,16	14	30,24
6.968.0641	ARDCOAT RESINA FENOLICA 1200x600x120 mm	6,30	4	2,88	10	28,80
6.968.0644	ARDCOAT RESINA FENOLICA 1200x600x130 mm	6,80	3	2,16	12	25,92
6.968.0647	ARDCOAT RESINA FENOLICA 1200x600x140 mm	7,35	4	2,88	8	23,04
6.968.0650	ARDCOAT RESINA FENOLICA 1200x600x150 mm	7,85	4	2,88	8	23,04
6.968.0653	ARDCOAT RESINA FENOLICA 1200x600x160 mm	8,40	3	2,16	10	21,60

CHECK THE QUOTATION AND THE TRANSPORTATION WITH SALES DEPT.MENT

CORK – AEROGEL

Ardcoat Sughero

Panel for thermal and acoustic insulation in natural expanded cork, obtained through a thermal process, without the addition of glues. CE marked in accordance with the UNI EN 13170 standard
 Reaction to fire: Euroclass E according to EN13150-1.
 Thermal conductivity 0.039 W/mK



Code	Description	RD	pcs./pkg.	m ² /pkg.	pcs./pallet	m ² /pallet
6.968.0704	ARDCOAT SUGHERO 1000x500x20 mm	0,50	6	45	16	120,00
6.968.0707	ARDCOAT SUGHERO 1000x500x30 mm	0,75	6	30	16	80,00
6.968.0710	ARDCOAT SUGHERO 1000x500x40 mm	1,00	6	24	16	64,00
6.968.0713	ARDCOAT SUGHERO 1000x500x50 mm	1,25	6	18	16	48,00
6.968.0716	ARDCOAT SUGHERO 1000x500x60 mm	1,50	6	15	16	40,00
6.968.0719	ARDCOAT SUGHERO 1000x500x80 mm	2,05	6	12	16	32,00
6.968.0722	ARDCOAT SUGHERO 1000x500x100 mm	2,55	6	9	16	24,00
6.968.0725	ARDCOAT SUGHERO 1000x500x120 mm	3,05	7	7	20	20,00
6.968.0728	ARDCOAT SUGHERO 1000x500x140 mm	3,55	6	6	18	18,00
6.968.0731	ARDCOAT SUGHERO 1000x500x160 mm	4,10	6	6	16	16,00
6.968.0734	ARDCOAT SUGHERO 1000x500x180 mm	4,60	10	5	24	12,00
6.968.0737	ARDCOAT SUGHERO 1000x500x200 mm	5,10	11	5,5	24	12,00

CHECK THE QUOTATION AND THE TRANSPORTATION WITH SALES DEPT.MENT

Ardcoat Aerogel

Thermal insulation panel in aerogel, resistant to compression, non-flammable, permeable to vapour and without coatings. Particularly suitable where high insulating power and reduced thickness of the insulating package are required.

CE marked in accordance with the UNI EN 13162 standard.
 Fire reaction: Euroclass B s1 d0 according to EN13150-1.
 Thermal conductivity 0.015 W/mK



Code	Description	RD	pcs./pkg.	m ² /pkg.	pcs./pallet	m ² /pallet
6.968.0614	ARDCOAT AEROGEL 1480x740x11 mm	0,69	25	27,38	4	188,28
6.968.0617	ARDCOAT AEROGEL 1480x740x22 mm	1,37	13	14,24	4	57,36
6.968.0620	ARDCOAT AEROGEL 1480x740x33 mm	2,06	8	9,86	4	39,44
6.968.0623	ARDCOAT AEROGEL 1480x740x44 mm	2,75	6	7,67	4	30,56
6.968.0626	ARDCOAT AEROGEL 1480x740x55 mm	3,44	5	5,48	4	21,92

CHECK THE QUOTATION AND THE TRANSPORTATION WITH SALES DEPT.MENT

ACCESSORIES PINS

Ardcoat Tasselli in PP Chiodo Nylon Ø 8 mm da assemblare

Percussion anchors in polypropylene diameter 8 mm with nail in nylon loaded with glass fiber PA6 GF30. Approved for concrete, solid bricks, perforated bricks, lightweight concrete and cellular concrete (cat A-B-C-D-E) **according to the ETAG014 Guideline**. The very low anchoring depth allows a minimum drilling depth. The temperature during the application of the anchors must be 0°C.



Technical Data

Pin diameter (dnom)	8 mm
Head diameter (Ø)	60 mm
Hole depth $h_1 \geq$	35 mm / 75 mm*
Anchorage depth $h_{ef} \geq$	25 mm / 65 mm*
Thermal transmittance	0,000 W/m ² k
Use categories according to ETAG014	A, B, C, D, E

* for Cat. E Cellular Concrete

Certified for the following material classes:

A Category CONCRETE	B Category FULL BRICK
C Category HOLLOW BRICK	D Category LIGHTENED CONCRETE
E Category CELLULAR CONCRETE	

Code	Description	Fixable Sp.	pcs./pkg.	Pallet	€/pcs.	€/pkg.
6.968.0099	TASSELLO A BATTUTA IN PP CHIODO NYLON 8x95 mm	60/20 mm	200 pz	16.000 pz	0,07	14,00 €
6.968.0102	TASSELLO A BATTUTA IN PP CHIODO NYLON 8x115 mm	80/40 mm	200 pz	12.800 pz	0,08	16,00 €
6.968.0105	TASSELLO A BATTUTA IN PP CHIODO NYLON 8x135 mm	100/60 mm	200 pz	9.600 pz	0,09	18,00 €
6.968.0108	TASSELLO A BATTUTA IN PP CHIODO NYLON 8x155 mm	120/80 mm	200 pz	9.600 pz	0,10	20,00 €
6.968.0111	TASSELLO A BATTUTA IN PP CHIODO NYLON 8x175 mm	140/100 mm	200 pz	8.000 pz	0,11	21,00 €
6.968.0114	TASSELLO A BATTUTA IN PP CHIODO NYLON 8x195 mm	160/120 mm	200 pz	8.000 pz	0,11	23,00 €

PRICES ARE TO BE CONSIDERED NET

Ardcoat Tasselli in PP Chiodo Acciaio Ø 8 mm da assemblare

Polypropylene hammer anchors, diameter 8 mm, with a nail in galvanized steel with a head covered in nylon reinforced with fiberglass to reduce thermal bridges. Approved for concrete, solid and perforated bricks (cat. A-B-C-D-E) **according to the ETAG014 Guideline**. The very low anchoring depth allows for a minimum drilling depth. Characterized by high values of resistance to extraction stresses (NRK). The temperature during the application of the anchors must be $\geq 0^\circ\text{C}$.



Technical Data

Pin diameter (dnom)	8 mm
Head diameter (Ø)	60 mm
Hole depth $h_1 \geq$	35 mm / 75 mm*
Anchorage depth $h_{ef} \geq$	25 mm / 65 mm*
Thermal transmittance	0,003 W/m ² k
Use categories according to ETAG014	A, B, C, D, E

* per Cat. E Calcestruzzo Cellulare

Certified for the following material classes:

A Category CONCRETE	B Category FULL BRICK
C Category HOLLOW BRICK	D Category LIGHTENED CONCRETE
E Category CELLULAR CONCRETE	

Code	Description	Fixable Sp.	pcs./pkg.	Pallet	€/pcs.	€/pkg.
6.968.0120	TASSELLO A BATTUTA IN PP CHIODO ACCIAIO 8x95 mm	60/20 mm	200 pz	9.600 pz	0,12	25,00 €
6.968.0123	TASSELLO A BATTUTA IN PP CHIODO ACCIAIO 8x115 mm	80/40 mm	200 pz	9.600 pz	0,14	28,00 €
6.968.0126	TASSELLO A BATTUTA IN PP CHIODO ACCIAIO 8x135 mm	100/60 mm	200 pz	8.000 pz	0,16	33,00 €
6.968.0129	TASSELLO A BATTUTA IN PP CHIODO ACCIAIO 8x155 mm	120/80 mm	200 pz	8.000 pz	0,18	36,00 €
6.968.0132	TASSELLO A BATTUTA IN PP CHIODO ACCIAIO 8x175 mm	140/100 mm	200 pz	6.400 pz	0,20	40,00 €
6.968.0135	TASSELLO A BATTUTA IN PP CHIODO ACCIAIO 8x195 mm	160/120 mm	200 pz	6.400 pz	0,22	43,00 €

PRICES ARE TO BE CONSIDERED NET

Tassello FIX PLUG 8

Percussion anchors in polypropylene diameter 8 mm with pre-assembled nail in glass-fiber-filled nylon PA6 GF50. Approved for concrete, solid bricks and perforated bricks (cat. A-B-C-D-E) **according to the Guideline ETAG014.**

The very low anchoring depth allows a minimum drilling depth. The temperature during the application of the anchors must be 0°C.



Technical Data

Pin diameter (dnom)	8 mm
Head diameter (Ø)	60 mm
Hole depth $h_1 \geq$	45 mm
Anchorage depth $h_{ef} \geq$	35 mm
Thermal transmittance	0,000 W/m ² k
Use categories according to ETAG014	A, B, C, D, E

Certified for the following material classes:

A Category CONCRETE	B Category FULL BRICK
C Category HOLLOW BRICK	D Category LIGHTENED CONCRETE
E Category CELLULAR CONCRETE	

Code	Description	Fixable Sp.	pcs./pkg.	Pallet	€/pcs.	€/pkg.
6.968.0141	TASSELLO FIX PLUG 8x110 mm	60 mm	200 pz	9.600 pz	0,10	19,00 €
6.968.0144	TASSELLO FIX PLUG 8x130 mm	80 mm	200 pz	9.600 pz	0,11	22,00 €
6.968.0147	TASSELLO FIX PLUG 8x150 mm	100 mm	200 pz	8.000 pz	0,13	27,00 €
6.968.0150	TASSELLO FIX PLUG 8x170 mm	120 mm	200 pz	8.000 pz	0,15	29,00 €
6.968.0153	TASSELLO FIX PLUG 8x190 mm	140 mm	200 pz	6.400 pz	0,16	31,00 €
6.968.0156	TASSELLO FIX PLUG 8x210 mm	160 mm	100 pz	4.800 pz	0,17	17,00 €

PRICES ARE TO BE CONSIDERED NET

Tassello WK THERM Ø 8

Percussion anchors in polypropylene diameter 8 mm with nail preassembled in nylon and steel loaded with glass fiber PA6 GF50. Approved for concrete, solid bricks, perforated bricks, lightened concrete and cellular concrete (cat. A-B-C) **according to the ETAG014 Guideline.** The very low anchoring depth allows a minimum drilling depth. The temperature during the application of the anchors must be 0° > C.



Technical Data

Pin diameter (dnom)	8 mm
Head diameter (Ø)	60 mm
Hole depth $h_1 \geq$	45 mm
Anchorage depth $h_{ef} \geq$	35 mm
Thermal transmittance for insulation sp 60-80 mm	0,001 W/m ² k
Thermal transmittance for insulation sp >80-180 mm	0,000 W/m ² k
Use categories according to ETAG014	A, B, C

Certified for the following material classes:

A Category CONCRETE	B Category FULL BRICK
C Category HOLLOW BRICK	

Code	Description	Fixable Sp.	pcs./pkg.	Pallet	€/pcs.	€/pkg.
6.968.0121	TASSELLO WK THERM 8x95 mm	40 mm	200 pz	9.600 pz	0,18	35,00 €
6.968.0124	TASSELLO WK THERM 8x115 mm	60 mm	200 pz	9.600 pz	0,20	40,00 €
6.968.0127	TASSELLO WK THERM 8x135 mm	80 mm	200 pz	8.000 pz	0,23	45,00 €
6.968.0130	TASSELLO WK THERM 8x155 mm	100 mm	200 pz	6.400 pz	0,26	51,00 €
6.968.0133	TASSELLO WK THERM 8x175 mm	120 mm	200 pz	6.400 pz	0,30	59,00 €
6.968.0136	TASSELLO WK THERM 8x195 mm	140 mm	200 pz	6.400 pz	0,34	68,00 €
6.968.0797	TASSELLO WK THERM 8x215 mm	160 mm	100 pz	4.800 pz	0,38	38,00 €
6.968.0799	TASSELLO WK THERM 8x235 mm	180 mm	100 pz	4.000 pz	0,46	46,00 €
6.968.0801	TASSELLO WK THERM 8x255 mm	200 mm	100 pz	4.000 pz	0,60	60,00 €
6.968.0803	TASSELLO WK THERM 8x275 mm	220 mm	100 pz	3.200 pz	0,65	65,00 €
6.968.0805	TASSELLO WK THERM 8x295 mm	240 mm	100 pz	3.200 pz	0,71	71,00 €

PRICES ARE TO BE CONSIDERED NET

Tassello TER 11-3 SGR (SGR-8)

8 mm hole hammer anchor, with pre-assembled nail in the shaft of the anchor. 60 mm head with improved adhesion and black expansion nail.

Compliant with the ETAG014 Guideline. Packaged in boxes of 100 pcs. Shaft and ring made of PP (polypropylene) and nail in PA (polyamide). Used for the mechanical anchoring of insulating panels and mineral wool and for the main types of masonry, supporting their load and "tear" tensile stress. The pre-assembled nail significantly facilitates and speeds up the installation of the anchors with evident savings in installation times.

ETA-17/0640



Certified for the following material classes:



**A Category
CONCRETE**



**B Category
FULL BRICK**



**C Category
HOLLOW BRICK**



**D Category
LIGHTENED
CONCRETE**



**E Category
CELLULAR
CONCRETE**

Code	Description	Fixable Sp.	pcs./pkg.	€/pcs.	€/pkg.
6.968.0068	TASSELLO TER 11-3 SGR 110 mm	60 mm	100 pz	0,15	15,00 €
6.968.0071	TASSELLO TER 11-3 SGR 130 mm	80 mm	100 pz	0,19	19,00 €
6.968.0074	TASSELLO TER 11-3 SGR 150 mm	100 mm	100 pz	0,22	22,00 €
6.968.0077	TASSELLO TER 11-3 SGR 170 mm	120 mm	100 pz	0,27	27,00 €
6.968.0080	TASSELLO TER 11-3 SGR 190 mm	140 mm	100 pz	0,32	32,00 €

PRICES ARE TO BE CONSIDERED NET

Tassello TER 11-3 SGR-AP (SGR-8AP)

8 mm hole hammer anchor, with pre-assembled nail in the shaft of the anchor. 60 mm head with improved adhesion and expansion nail with white plastic nail cover with "thermal cut". **Compliant with the ETAG014 Guideline.** Packaged in boxes of 100 pcs. Shaft and ring made of PP (polypropylene), steel nail and nail cover in PA (polyamide). Used for the mechanical anchoring of insulating and mineral wool panels and for the main types of masonry, supporting the load and "tear" tensile stress. The pre-assembled nail makes the installation of the anchors much easier and faster, with an obvious saving in installation times.

ETA-17/0640



Certified for the following material classes:



**A Category
CONCRETE**



**B Category
FULL BRICK**



**C Category
HOLLOW BRICK**



**D Category
LIGHTENED
CONCRETE**



**E Category
CELLULAR
CONCRETE**

Code	Description	Fixable Sp.	pcs./pkg.	€/pcs.	€/pkg.
6.968.0083	TASSELLO TER 11-3 SGR-AP (SGR-8AP) 110 mm	60 mm	100 pz	0,29	29,00 €
6.968.0086	TASSELLO TER 11-3 SGR-AP (SGR-8AP) 130 mm	80 mm	100 pz	0,34	34,00 €
6.968.0089	TASSELLO TER 11-3 SGR-AP (SGR-8AP) 150 mm	100 mm	100 pz	0,36	36,00 €
6.968.0092	TASSELLO TER 11-3 SGR-AP (SGR-8AP) 170 mm	120 mm	100 pz	0,40	40,00 €
6.968.0095	TASSELLO TER 11-3 SGR-AP (SGR-8AP) 190 mm	140 mm	100 pz	0,46	46,00 €

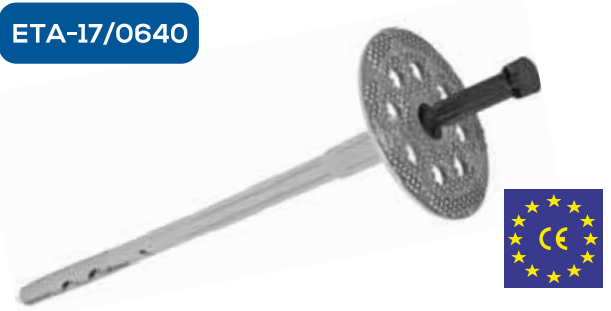
PRICES ARE TO BE CONSIDERED NET

Tassello TER 11-22 (Dakota PP-La)

8 mm hole hammer anchor, with pre-assembled nail in the shaft of the anchor. 60 mm head with improved adhesion and black expansion nail.

Compliant with the ETAG014 Guideline. Packaged in boxes of 100 pcs. Shaft and ring made of PP (polypropylene) and nail in PA (polyamide). Used for the mechanical anchoring of insulating panels and mineral wool and for the main types of masonry, supporting their load and "tear" tensile stress. The pre-assembled nail significantly facilitates and speeds up the installation of the anchors with evident savings in installation times.

ETA-17/0640



Certified for the following material classes:



Code	Description	Fixable Sp.	pcs./pkg.	€/pcs.	€/pkg.
6.968.0096	TASSELLO TER 11-22 70 mm	10/20 mm	500 pz	0,14	70,00 €
6.968.0097	TASSELLO TER 11-22 90 mm	40 mm	400 pz	0,15	60,00 €
6.968.0084	TASSELLO TER 11-22 110 mm	60 mm	350 pz	0,16	56,00 €

PRICES ARE TO BE CONSIDERED NET

Tassello TER 11-3 SGR-AV (SGR-8AV)

Polypropylene screw anchors, diameter 8 mm, with pre-assembled steel nail. The co-molded screw in plastic and metal minimizes thermal bridges. Approved for concrete, solid bricks, perforated bricks, lightweight concrete, cellular concrete (cat. A-B-C-D-E) **according to the ETAG014 Guideline.** The very low anchoring depth allows for a minimum drilling depth. The temperature during the application of the anchors must be $\geq 0^{\circ}\text{C}$. Quick and easy installation with a drill or screwdriver using the special CS assembly cutter that allows both concealed assembly in the insulating panel (with the subsequent use of hole cover caps) and flush with the panel itself.

ETA-17/0640



Certified for the following material classes:



Code	Description	Fixable Sp.	pcs./pkg.	€/pcs.	€/pkg.
6.968.0085	TASSELLO TER 11-3 SGR-AV (SGR-8AV) 110 mm	60 mm	100 pz	0,38	38,00 €
6.968.0087	TASSELLO TER 11-3 SGR-AV (SGR-8AV) 130 mm	80 mm	100 pz	0,41	41,00 €
6.968.0088	TASSELLO TER 11-3 SGR-AV (SGR-8AV) 150 mm	100 mm	100 pz	0,46	46,00 €
6.968.0090	TASSELLO TER 11-3 SGR-AV (SGR-8AV) 170 mm	120 mm	100 pz	0,52	52,00 €
6.968.0091	TASSELLO TER 11-3 SGR-AV (SGR-8AV) 190 mm	140 mm	100 pz	0,63	63,00 €
6.968.0093	TASSELLO TER 11-3 SGR-AV (SGR-8AV) 210 mm	160 mm	100 pz	0,72	72,00 €

PRICES ARE TO BE CONSIDERED NET

Tassello WKTHERM S

Polypropylene screw anchors, diameter 8 mm, with pre-assembled steel nail. The co-molded screw in plastic and metal material minimizes thermal bridges. Approved for concrete, solid bricks, perforated bricks, lightweight concrete, cellular concrete (cat. A-B-C-D-E) **according to the ETAG014 Guideline**. The very low anchoring depth allows for a minimum drilling depth. The temperature during the application of the anchors must be $\geq 0^{\circ}\text{C}$. Quick and easy installation with a drill or screwdriver using the special CS assembly cutter that allows both concealed assembly in the insulating panel (with the subsequent use of the T13.TAP.01 hole cover caps) and flush with the panel itself.

ETA-17/0640



Technical Data

Pin diameter (dnom)	8 mm	Anchorage depth $h_{ef} \geq$	35 mm
Head diameter (\emptyset)	60 mm	Thermal transmittance	0,002 W/m ² k
Hole depth $h_1 \geq$ for wall-mounted application for concealed application	45 mm 60 mm	Use categories according to ETAG014	A, B, C, D, E

Certified for the following material classes:



**A Category
CONCRETE**



**B Category
FULL BRICK**



**C Category
HOLLOW BRICK**



**D Category
LIGHTENED
CONCRETE**



**E Category
CELLULAR
CONCRETE**

Code	Description	Fixable Sp.	pcs./pkg.	Pallet	€/pcs.	€/pkg.
6.968.0807	TASSELLO WKTHERM S 8x95 mm	60/20 mm	200 pz	9.600 pz	0,18	37,00 €
6.968.0198	TASSELLO WKTHERM S 8x115 mm	80/40 mm	200 pz	9.600 pz	0,21	41,00 €
6.968.0201	TASSELLO WKTHERM S 8x135 mm	100/60 mm	200 pz	8.000 pz	0,24	47,00 €
6.968.0204	TASSELLO WKTHERM S 8x155 mm	120/80 mm	200 pz	6.400 pz	0,27	54,00 €
6.968.0207	TASSELLO WKTHERM S 8x175 mm	140/100 mm	200 pz	6.400 pz	0,31	62,00 €
6.968.0210	TASSELLO WKTHERM S 8x195 mm	160/120 mm	200 pz	6.400 pz	0,36	71,00 €
6.968.0213	TASSELLO WKTHERM S 8x215 mm	180/140 mm	100 pz	4.800 pz	0,41	41,00 €
6.968.0216	TASSELLO WKTHERM S 8x235mm	200/160 mm	100 pz	4.000 pz	0,49	49,00 €
6.968.0219	TASSELLO WKTHERM S 8x255 mm	220/180 mm	100 pz	4.000 pz	0,63	63,00 €
6.968.0222	TASSELLO WKTHERM S 8x275 mm	240/200 mm	100 pz	3.200 pz	0,69	69,00 €
6.968.0225	TASSELLO WKTHERM S 8x295 mm	260/220 mm	100 pz	3.200 pz	0,75	75,00 €

PRICES ARE TO BE CONSIDERED NET

Ardcoat Tasselli Ecotwist

Polypropylene anchor with steel screw suitable for all thicknesses from 100 mm to 400 mm. It is therefore no longer necessary to use anchors of different lengths based on the thickness of the insulation. EcoTwist guarantees quick and safe fixing for all thicknesses, allowing you to save space and costs for storage and to optimize the application time. Suitable for polystyrene panels and compact mineral wool. EcoTwist is applied in a concealed manner in depth, limiting thermal bridges and the formation of reliefs on the surface of the insulation, the installation hole can be sealed with foam or with suitable polystyrene caps. Thanks to a special assembly accessory, the helix and steel screw are fixed in a single operation. Approved for concrete, solid bricks, perforated bricks, lightweight concrete and cellular concrete (cat A-B-C-D-E) according to the ETAG014 guideline.



Technical Data

Pin diameter (dnom)	8 mm	Hole depth in support material h_{\geq}	75 mm
Head diameter (\emptyset)	66 mm	Overall hole depth	hd+75 mm
Length of Id dowel	202 mm / 232 mm	Distance of rosette from support material h_E	70 mm
Insulation thickness h_D	100-400 mm	Position of the shank in the hole $h_{nom} \geq$	65 mm
Anchorage depth $h_{ef} \geq$	35 mm	Use categories according to ETAG014	A, B, C, D, E

Certified for the following material classes:

	A Category CONCRETE		B Category FULL BRICK		C Category HOLLOW BRICK		D Category LIGHTENED CONCRETE		E Category CELLULAR CONCRETE
--	--------------------------------	--	----------------------------------	--	------------------------------------	--	--	--	---

Code	Description	Fixable Sp.	pcs./pkg.	€/pcs.	€/pkg.
6.968.0245	TASSELLO IN PP ECOTWIST 8x202 mm	100-400 mm	100 pz	0,85	85,00
6.968.0248	TASSELLO IN PP ECOTWIST 8x232 mm	100-400 mm	100 pz	0,91	91,00
6.968.0251	TAPPO DI CHIUSURA IN EPS PER TASSELLO ECOTWIST		200 pz	0,09	18,00
6.968.0254	UTENSILE DI MONTAGGIO PER TASSELLO ECOTWIST		1 pz	37,09	37,09

PRICES ARE TO BE CONSIDERED NET

ACCESSORIES NETWORKS & PROFILES

RETE IN FIBRA DI VETRO 150 g/m²

Blue or white fiberglass mesh with anti-alkaline treatment weighing 150 g/m², compliant with the requirements of EAD 040083-00-0404. Specific mesh for the creation of composite systems for thermal insulation and reinforced smoothing of building surfaces, by drowning in the smoothing adhesives of the ARDCOAT series.

SUITABLE FOR:



COAT INSULATION



INTERNAL/EXTERNAL SHAVING



Code	Description	Pallet	€/m ²	€/packaging
6.968.0005	RETE FIBRA DI VETRO h: 1,10 mt x 50 ml (55 mq)	33 rolls -1.815 mq	0,98	53,73

PRICES ARE TO BE CONSIDERED NET

Ardcoat Rete 150 Quality (100 bianca)

Alkali-resistant, ladder-proof glass fiber mesh used in external thermal insulation composite systems (ETICS) as reinforcement for the smoothing layer of the insulating panel. The use of the mesh allows for uniform distribution of the tensions to which the system may be subjected (shrinkage phenomena, mechanical stresses, temperature changes, etc.), significantly reducing the risk of surface cracks in the facade. Furthermore, by reinforcing the smoothing layer, the mesh allows for greater protection of the underlying insulating panel. The mesh complies with the EAD Guideline 040083-00-0404 for ETICS (External Thermal Insulation Composite System), as certified by IFBT GmbH-MFPA Leipzig GmbH.

IDONEA PER:



COAT INSULATION



INTERNAL/EXTERNAL SHAVING



Code	Description	Pallet	€/m ²	€/packaging
6.968.0008	RETE CAPPOTTO 150 GR QUALITY BIANCA h: 1,00 mt x 50 m (50 mq)	33 rolls -1.650 mq	0,70	35,00

PRICES ARE TO BE CONSIDERED NET

Ardcoat Rete Lifitex 165 g/m² ETAG 004

White fiberglass mesh with anti-alkaline treatment, compliant with the requirements of EAD 040083-00-0404. Specific mesh for the creation of composite systems for thermal insulation and reinforced smoothing of building surfaces, by drowning in the smoothing adhesives of the ARDCOAT series.

IDONEA PER:



COAT INSULATION



INTERNAL/EXTERNAL SHAVING



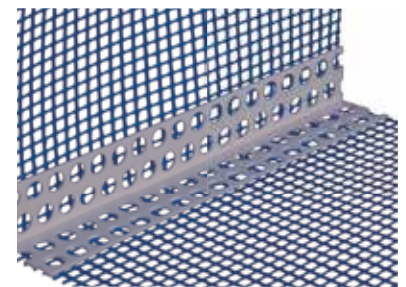
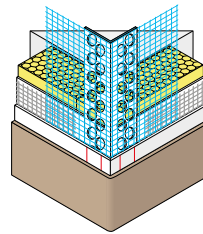
Code	Description	Pallet	€/m ²	€/packaging
6.968.0813	RETE LIFITEX h: 1,00 mt x 50 ml (50 mq)	33 rolls -1.650 mq	0,87	43,30

PRICES ARE TO BE CONSIDERED NET



Ardcoat Angolare pvc Premium con rete

Fiberglass mesh corner 165 gr/mq certified EAD 040083-00-0404 reinforced inside with PVC profile forming a 90° angle.
 Used for reinforcing corners, sharp edges, edges.
 Resistant to sliding.
 Resistant to alkalis and UV rays.

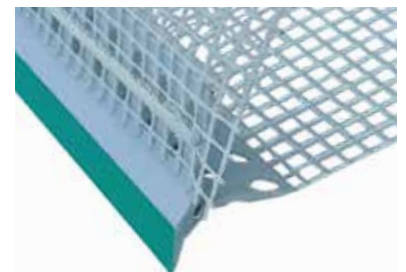
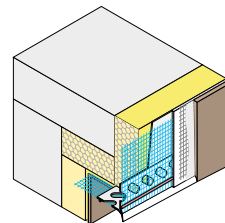


Code	Description	pcs./pkg.	m ² /pkg.	€/m ²	€/pkg.
6.968.0012	ANGOLARE PVC PREMIUM CON RETE 8x12x250 cm	50	125	0,51	63,75
6.968.0809	ANGOLARE PVC-ECO 8x12x250 cm	50	125	0,49	61,25
6.968.0016	ANGOLARE PVC CON RETE 10x15x250 cm	50	125	0,59	73,75
6.968.0018	ANGOLARE PVC CON RETE 10x23x250 cm	50	125	0,73	91,25

PRICES ARE TO BE CONSIDERED NET

Ardcoat Angolare pvc rompigoccia Premium con rete

PVC corner with heat-sealed fiberglass mesh 165 gr/m² certified EAD 040083-00-0404. Used for making corners with drip edge (e.g. in correspondence with balconies, window lintels, roller shutter boxes, etc.). The particular shape of the PVC profile allows the interruption of the flow of water in correspondence with the corner, preventing its infiltration inside it. Resistant to sliding.
 Resistant to alkalis and UV rays.

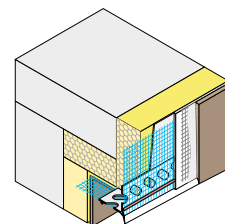


Code	Description	pcs./pkg.	m ² /pkg.	€/m ²	€/pkg.
6.968.0022	ANGOLARE PVC ROMPIGOCCIA PREMIUM CON RETE 10x10x250 cm	25	62,5	1,05	65,62

PRICES ARE TO BE CONSIDERED NET

Ardcoat Angolare pvc rompigoccia a scomparsa Premium con rete

PVC corner with heat-sealed fiberglass mesh 165 gr/m² certified EAD 040083-00-0404. The profiles create a precise and stable shaving closure with a drip edge at the soffits of balconies, window lintels, roller shutter boxes, etc. The particular shape of the PVC profile allows the interruption of the flow of water at the corner, preventing infiltration inside it. Resistant to sliding.
 Resistant to alkalis and UV rays.

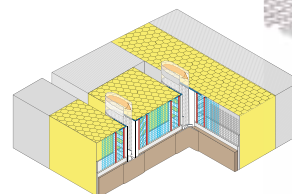


Code	Description	pcs./pkg.	m ² /pkg.	€/m ²	€/pkg.
6.968.0028	ANGOLARE PVC ROMPIGOCCIA A SCOMPARSA PREMIUM CON RETE 10x10x250 cm	25	62,5	1,11	69,37

PRICES ARE TO BE CONSIDERED NET

Ardcoat Giunto di dilatazione in pvc con rete

Linear or orthogonal PVC joint with heat-sealed fiberglass mesh 165 gr/m² certified EAD 040083-00-0404.
 Used for sealing expansion joints on flat, adjacent and aligned surfaces.
 Suitable for joint widths of min 5 and max 30 mm.
 Resistant to sliding. Resistant to alkalis and UV rays.

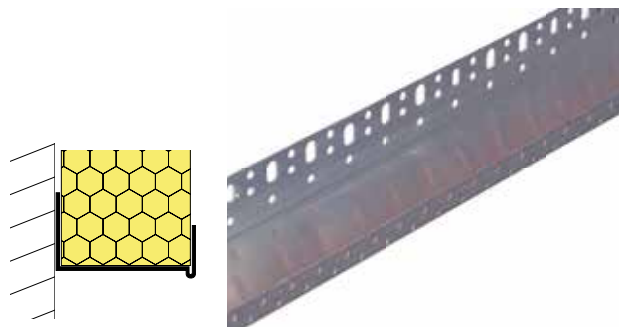


Code	Description	pcs./pkg.	m ² /pkg.	€/m ²	€/pkg.
6.968.0030	GIUNTO PVC DILATAZIONE LINEARE CON RETE 10x10x250 cm	25	62,5	5,07	316,87
6.968.0033	GIUNTO PVC DILATAZIONE ANGOLO CON RETE 10x10x250 cm	25	62,5	5,07	316,87

PRICES ARE TO BE CONSIDERED NET

Ardcoat Profilo di partenza in alluminio

Non-deformable aluminum profile with a thickness of between 0.8 and 1.2 mm with drip. Used for the correct lower seal of the external insulation system. The particular lateral drilling of the profile allows for quick anchoring to the support. It is recommended to use it together with the PVC DRIP STARTER profile, to ensure greater protection from humidity as well as greater reinforcement in the connection area between sheet metal and plaster, with a consequent reduction in the risk of cracks.



Code	Description	pcs./pkg.	m ³ /pcs.	€/m ³	€/pcs.
6.968.0743	PROFILO DI PARTENZA ALLUMINIO 4x250 cm	1	2,5	2,35	5,88
6.968.0745	PROFILO DI PARTENZA ALLUMINIO 5x250 cm	1	2,5	2,47	6,19
6.968.0747	PROFILO DI PARTENZA ALLUMINIO 6x250 cm	1	2,5	2,60	6,50
6.968.0749	PROFILO DI PARTENZA ALLUMINIO 7x250 cm	1	2,5	2,97	7,42
6.968.0751	PROFILO DI PARTENZA ALLUMINIO 8x250 cm	1	2,5	2,97	7,42
6.968.0753	PROFILO DI PARTENZA ALLUMINIO 9x250 cm	1	2,5	3,28	8,20
6.968.0755	PROFILO DI PARTENZA ALLUMINIO 10x250 cm	1	2,5	3,65	9,12
6.968.0757	PROFILO DI PARTENZA ALLUMINIO 11x250 cm	1	2,5	3,96	9,90
6.968.0759	PROFILO DI PARTENZA ALLUMINIO 12x250 cm	1	2,5	4,33	10,83
6.968.0763	PROFILO DI PARTENZA ALLUMINIO 14x250 cm	1	2,5	5,20	12,99
6.968.0765	PROFILO DI PARTENZA ALLUMINIO 15x250 cm	1	2,5	5,69	14,23
6.968.0767	PROFILO DI PARTENZA ALLUMINIO 16x250 cm	1	2,5	6,06	15,16
6.968.0771	PROFILO DI PARTENZA ALLUMINIO 18x250 cm	1	2,5	6,68	16,70
6.968.0775	PROFILO DI PARTENZA ALLUMINIO 20x250 cm	1	2,5	7,30	18,25

PRICES ARE TO BE CONSIDERED NET. PRODUCT SOLD PER SINGLE PIECE.

Ardcoat Nastro di guarnizione autoespandente

Self-adhesive and self-expanding sealing tape in pre-compressed polyurethane foam. Used for sealing joints between the insulation system and door and window frames, balconies, windowsills, systems, etc. BG1 certifications guarantee permeability to water vapor, resistance to rain and wind pressure. NB: The width of the joint is the size required to have the water, air and wind tightness performance required by the BG1 certification.



Code	Description	Post expansion	pcs./pkg.	€/pcs*	€/pkg*
6.968.0273	NASTRO DI GUARNIZIONE DA 15 mm sp. 3 mm	7 mm	20		
6.968.0276	NASTRO DI GUARNIZIONE DA 20 mm sp. 3 mm	7 mm	15		
6.968.0279	NASTRO DI GUARNIZIONE DA 15 mm sp. 5 mm	10 mm	20		
6.968.0282	NASTRO DI GUARNIZIONE DA 20 mm sp. 5 mm	10 mm	15		
6.968.0285	NASTRO DI GUARNIZIONE DA 15 mm sp. 7 mm	12 mm	20		
6.968.0288	NASTRO DI GUARNIZIONE DA 20 mm sp. 7 mm	12 mm	15		

ON
REQUEST

* PREZZI SU RICHIESTA

Delivery charge: for each order of accessories (mesh, dowels, profiles, tape...) it is necessary to provide:

- For orders under €1,450.00 of accessories only, a charge of €35.00;
- For orders between €1,451.00 and €2,160.00 of accessories only, a charge of €25.00;
- Free port for orders over €2,161.00;
- Charge for unloading service with hydraulic tail lift: €25.00.

Any deliveries combined with insulation must be agreed with our Sales Office.

ACCESSORIES

CAPS AND DISCS

Ardcoat Tappi Eps Copritasselli

Sintered expanded polystyrene discs class 100 used to cover the head of the dowel in recessed fixing systems. Their use guarantees excellent thermal insulation and the creation of a flat surface.

Also available in eps with graphite.



Code	Description	pcs./pkg.	€/pcs.	€/pkg.
6.968.0258	TAPPO DI CHIUSURA IN EPS 100 BIANCO Ø 67 sp. 17 mm	100 pz	0,06	6,10
6.968.0261	TAPPO DI CHIUSURA IN EPS 100 GRAFITE Ø 67 sp. 17 mm	100 pz	0,06	6,10

PRICES ARE TO BE CONSIDERED NET

Ardcoat Disco in PP per tasselli

Additional discs used to increase the diameter of the dowel head. In this way the dowels adapt to the requirements of the various insulating materials, even the softest ones (e.g. laminated rock wool). Approved according to the ETAG014 Guideline.



Code	Description	pcs./pkg.	€/pcs.	€/pkg.
6.968.0264	ROSETTA PP PER TASSELLI Ø 90 mm	600 pz	0,12	72,00
6.968.0270	ROSETTA PP PER TASSELLI Ø 140 mm	600 pz	0,23	138,00

PRICES ARE TO BE CONSIDERED NET

Ardcoat Fresa in plastica rossa per tappo in EPS



Code	Description	pcs./pkg.	€/pcs.	€/pkg.
6.968.0811	FRESA IN PLASTICA ROSSA PER TAPPO IN EPS Ø 67 mm	1 pz	5,22	5,22

PRICES ARE TO BE CONSIDERED NET

PREPARATION PRODUCTS PIGMENTED PRIMER FOR ARDCOAT SYSTEM CYCLES

Primer Riempitivo Coprente

Pigmented sealer with high hiding power



15-20% in water volume



10-15% in water volume



approx. 6 m²/l for 1 layer



recoatable after 4 h



Possible exterior hues with the tinting system
SIXTEEN COLOURS or **WIZARD**



Code	Description	Packaging	€/L	€/pkg.	€/m ²
0.075.1010 white	Primer Riempitivo Coprente	14 L	7,72	108,08	1,29
		4 L	8,76	35,04	1,46

Rasante a Pennello

Rough acryl-siloxanic pigmented primer



12-15% in water volume



15-10% in water volume



approx. 3,7 m²/l for 1 layer



recoatable after 4 h



Possible exterior hues with the tinting system
SIXTEEN COLOURS



ETA-17/O640

Code	Description	Packaging	€/L	€/pkg.	€/m ²
0.084.1010 white	Rasante a Pennello	14 L	9,35	130,90	2,67
		4 L	10,39	41,56	2,97
0.084.1023 neutral white		13,16	6,86	90,28	1,96
		3,76	7,97	29,97	2,28

Silrest Intermedio

Silicate filler uniforming primer



10-15% in ISOREST
s. 0.076 volume



approx. 3,3 m²/l for 1 layer



recoatable after 24 h



Possible exterior hues with the tinting system
SIXTEEN COLOURS or **WIZARD**



Code	Description	Packaging	€/L	€/pkg.	€/m ²
0.095.1010 white	Silrest Intermedio	15 L	13,07	196,05	4,36

Rasard

Uniforming smoother



5-10% in water volume



5-10% in water volume



approx. 2 m²/l



recoatable after 4 h



Possible exterior hues with the tinting system
SIXTEEN COLOURS or **WIZARD**



Code	Description	Packaging	€/L	€/pkg.	€/m ²
0.083.1010 white	Rasard	14 L	8,53	119,42	4,26
		4 L	9,57	38,28	4,78

FINISH PRODUCTS COATINGS FOR ARDCOAT SYSTEM CYCLES

Intonaclima 1,2- 1,5 mm

Algae resistant acryl-siloxane fiber-reinforced coating



ready to use
(steel or plastic float)



1 mm: 0,55 m²/kg
1,2 mm: 0,45 m²/kg
1,5 mm: 0,36 m²/kg



UNI EN 15824
certification label



complied to:
. UNI 15457:2008 regulation (mold resistant)
. UNI 15458:2008 regulation (algae resistant)



ETA-17/0640

Code	Description	Packaging	€/kg	€/packaging	€/m ²
1.635.1010 white	Intonaclima 1,2 mm	25 kg	5,22	130,50	11,60
1.635.1013 gel white		24 kg	4,75	114,00	10,55
1.630.1010 white	Intonaclima 1,5 mm	25 kg	5,22	130,50	14,50
1.630.1013 gel white		24 kg	4,75	114,00	12,86

The product can be manufactured, on demand, in the grain size 2,0 mm (minimum order 2000 kg or multiple)

Ardelast Intonachino 1,2 mm

Algae resistant acrylic-siloxane elastomeric shaved coating



ready to use
(steel or plastic float)



1 mm: 0,5 m²/kg
1,2 mm: 0,4 m²/kg



UNI EN 15824
certification label



complied to:
. UNI 15457:2008 regulation (mold resistant)
. UNI 15458:2008 regulation (algae resistant)

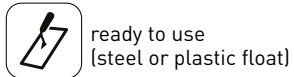


ETA-17/0640

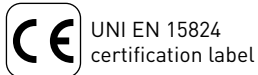
Code	Description	Packaging	€/kg	€/packaging	€/m ²
1.645.1010 white	Ardelast Intonachino 1,2 mm	25 kg	7,56	189,00	15,12
1.645.1013 gel white		2,5 kg	8,76	21,90	17,52
		24 kg	6,96	167,04	13,92
		2,4 kg	8,06	19,34	16,12

Siliard Intonachino 1,2 mm

Siloxanic **algae resistant** plaster



m²/kg 1,2 mm: 0,45 m²/kg



complied to:
 . UNI 15457:2008 regulation (mold resistant)
 . UNI 15458:2008 regulation (algae resistant)

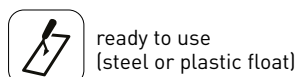


Code	Description	Packaging	€/kg	€/packaging	€/m ²
1.625.1010 white	Siliard Intonachino 1,2 mm	25 kg	6,83	170,75	15,18
1.625.1013 gel white		24 kg	6,35	152,40	14,11

The product can be manufactured, on demand, in the grain size 1,5 and 2,0 mm (minimum order 2000 kg or multiple)

Silrest Intonachino 1,2 mm

Silicate mineral plaster



m²/kg 1 mm: 0,5 m²/kg
1,2 mm: 0,4 m²/kg



Code	Description	Packaging	€/kg	€/packaging	€/m ²
1.629.1010 white	Silrest Intonachino 1,2 mm	25 kg	6,31	157,75	15,77
1.645.1013 gel white		24 kg	5,74	137,76	14,35

The product can be manufactured, on demand, in the grain size 1,5 and 2,0 mm (minimum order 2000 kg or multiple)

CHOICE OF CYCLES

TABLE FOR THE SELECTION OF ARD PRODUCTS FOR THE CREATION OF ARDCOAT SYSTEMS GUARANTEED FOR 10 YEARS WITH INSURANCE CERTIFICATE

	TYPE OF SUPPORT							TYPE OF SUPPORT		
	EDIFICI NUOVI O CON VECCHIE FINITURE BEN COESE AL SUPPORTO							VECCHIO SISTEMA ETICS IN BUONO STATO		
	ARDCOAT SYSTEM							ARDCOAT SYSTEM		
	ARDCOAT EPS	ARDCOAT GRAFITE	ARDCOAT MWV	ARDCOAT ICB	ARDCOAT SK	ARDCOAT GEL	ARDCOAT PF	ARDCOAT EPS	ARDCOAT GRAFITE	ARDCOAT MWV
	INSULATOR							INSULATOR		
	EPS white	EPS graphite	rock wool	cork	expanded polyurethane	aerogel	phenolic resin	EPS white	EPS graphite	rock wool
GLUING THE PANELS	ARDCOAT S8	●	●	●	●	●	●	●	●	●
	ARDCOAT C8	●	●	●	●	●	●	●	●	●
	ARDCOAT C8W	●	●	●	●	●	●	●	●	●
	ARDCOAT C10	●	●	●	●	●	●	●	●	●
	ARDCOAT C16	●	●	●	●	●	●	●	●	●
	ARDCOAT C16W	●	●	●	●	●	●	●	●	●
	ARDCOAT L10 GLASS	●	●	●	●	●	●	●	●	●
	ARDCOAT L10 EPS	●	●	●	●	●	●	●	●	●
	ARDCOAT M8	●	●	●	●	●	●	●	●	●
PINS	REQUIRED	REQUIRED	REQUIRED	REQUIRED	REQUIRED	REQUIRED	REQUIRED	REQUIRED	REQUIRED	REQUIRED
ARMED SHAVING	ARDCOAT S8	●	●	●	●	●	●	●	●	●
	ARDCOAT C8	●	●	●	●	●	●	●	●	●
	ARDCOAT C8W	●	●	●	●	●	●	●	●	●
	ARDCOAT C10	●	●	●	●	●	●	●	●	●
	ARDCOAT C16	●	●	●	●	●	●	●	●	●
	ARDCOAT C16W	●	●	●	●	●	●	●	●	●
	ARDCOAT L10 GLASS	●	●	●	●	●	●	●	●	●
	ARDCOAT L10 EPS	●	●	●	●	●	●	●	●	●
	ARDCOAT M8	●	●	●	●	●	●	●	●	●
PRIMER	PRIMER RIEMPITIVO COPRENTE	●	●	●	●	●	●	●	●	●
	RASANTE A PENNELLO	●	●	●	●	●	●	●	●	●
	RASARD	●	●	●	●	●	●	●	●	●
	SILREST INTERMEDIO	●	●	●	●	●	●	●	●	●
FINISHING	INTONACLIMA	●	●	●	●	●	●	●	●	●
	ARDELAST INTONACHINO	●	●	●	●	●	●	●	●	●
	SILREST INTONACHINO	●	●	●	●	●	●	●	●	●
	SILIARD INTONACHINO	●	●	●	●	●	●	●	●	●

● SUITABLE

● RECOMMENDED

● NOT RECOMMENDED

PRODUCT CHOICE

TABLE OF THE DIFFERENT ARDCOAT INSULATING SYSTEMS AVAILABLE WHICH ALLOWS YOU TO ORIENT YOURSELF CLEARLY BY CHOOSE IN A CONSCIOUS WAY THE COAT THAT BEST MEETS YOUR NEEDS

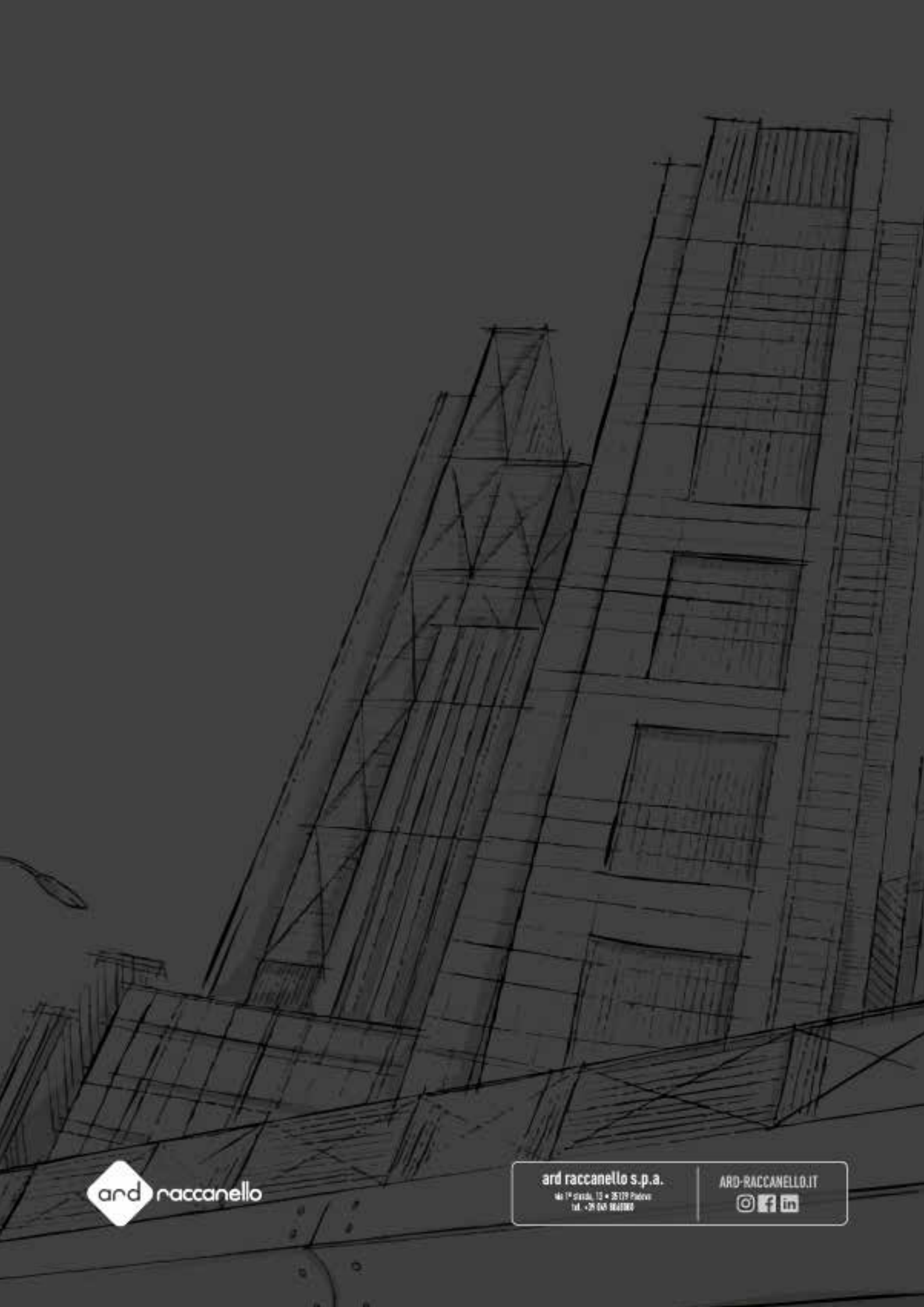
	ARDCOAT SYSTEM						
	ARDCOAT EPS	ARDCOAT GRAFITE	ARDCOAT MW	ARDCOAT ICB	ARDCOAT SK	ARDCOAT GEL	ARDCOAT PF
	INSULATING						
	EPS white	EPS graphite	rock wool	cork	expanded polyurethane	aerogel	phenolic resin
WINTER INSULATION	★★★	★★★	★★★	★★	★★★	★★★	★★★
SUMMER INSULATION	★★	★★	★★	★	★★	★★	★★
ECONOMICALITY	★★★	★★★	★	★	★★	★★	★★
STEAM DIFFUSION	★★	★★	★★★	★★★	★★	★★★	★★
ACOUSTIC INSULATION	★★★	★★★	★★★	★	★	★	★
NEW CONSTRUCTION	★★★	★★★	★★★	★★★	★★★	★★★	★★★
EASY INSTALLATION	★★★	★★★	★★	★	★★★	★★	★★★
FIRE RESISTANCE	★	★	★★★	★★	★★★	★★★	★★★
RENOVATION	★★★	★★★	★★★	★★★	★★★	★★★	★★★

★★★ OTTIMO

★★ BUONO

★ DISCRETO

For any particular need regarding the accessories for completing the thermal coat system, you can take advantage of the experience of our ARD Technical Assistance service that will provide all the information, quotations and availability regarding your needs.



ard raccanello s.p.a.

via 1° strada, 13 • 35129 Padova
tel. +39 049 964190

ARD-RACCANELLO.IT

